

SOUTHERN NEWS

ISSUE 1

MARCH / APRIL WORKPARTY CALENDAR

12 March

Issaacs Ridge ParkCare

18 March

Friends of Tidbinbilla

19 March

Cooleman Ridge ParkCare

25 March

Urambi Hills ParkCare

26 March

Friends of Featherstone
Gardens

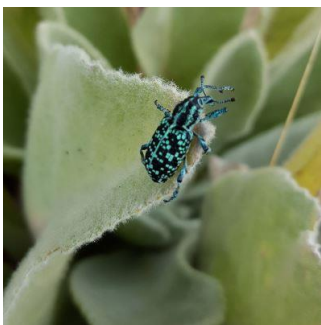
2 April

Farrer Ridge ParkCare

2 April

Red Hill ParkCare

Contact the SACTCG office for further
details



Botany Bay Weevil, Tidbinbilla

From the Office

Hi everyone. Welcome to our new look monthly newsletter. We aim to give you information you need to support the great work you do and to share some happenings and learnings from throughout our network. Please send us your stories and successes so that we can share and promote them and celebrate Southern ParkCare and Landcare. Working bee dates, stories, information of interest and photos can be sent to Fiona at projects@sactcg.org.au

Southern ACT Catchment Group and Strategy

The SACTCG is currently developing 10-year Catchment Strategies and 5-year operational plans with support from the ACT Government. Recently the SACTCG ran a very useful member group consultation meeting where we heard some of the issues and areas of support needed by our ParkCare and Landcare Groups and rural members.

Our Catchment Group is here to support you, our members. Through this Strategic Planning process we are keen to hear from you on how you think we can best support your work and where our areas of focus should be in the south. A one question survey has been sent out to all our members. If you haven't yet given us your thoughts please do so. Or, feel free to directly contact Martine if you prefer a chat at info@sactcg.org.au or phone 0447 223 396.

Green Army Teams

The current Green Army Team is up and running with Liz Collier supervising. This is the 5th team coordinated by the Catchment Groups in the ACT and is now fully booked with work.

On March 14th our **Aboriginal Green Army Team** commences and will be the last of our teams. They will be available for regular bookings for SACTCG members as previous teams but will also be working around cultural heritage sites such as the Theodore Grinding Grooves. They will also be supported by a mentor (Wally Bell) to receive cultural heritage training. The team is an exciting new endeavour for the SACTCG and we hope the beginning of new engagement with the Aboriginal community in the south.

For bookings contact Martine info@sactcg.org.au or Fiona projects@sactcg.org.au

Southern Aboriginal Cultural Heritage Sites

We are working with Buru Ngunawal Aboriginal Corporation to understand where important Heritage sites are in the south that we need to protect and conserve. This is a big job and we know there are a lot of unregistered and unrecognised sites in our reserves and on private land. If you suspect you have a cultural heritage site on your patch please contact Martine to discuss.

ACT Heritage Grants

On Saturday 4 March, Minister Gentleman announced the opening of the new round of ACT Heritage Grants. The link below will take you to the ACT Heritage Grants page. If you have any ideas for projects that you would like assistance with contact Martine to discuss. http://www.environment.act.gov.au/heritage/heritage-and-the-community/heritage_grants_program

Erosion Control Workshop

SACTCG are undertaking with Amberley farm with the assistance of an ACT Environment Grant. As part of this project we have invited people to join us for a brief half-day hands-on workshop on the **18th March 9:30 -12:30** with Cam Wilson to get some work completed and share Cam's knowledge on restoration and erosion control. There is still some room left. Contact Martine if you would like to attend.

Gudgenby Woody Weed Works

If your down near Bobeyan road take a look at the great work SACTCG is undertaking with Gudgenby landholders and a big forest track mulcher to remove the dense infestation of woody weeds along the Gudgenby River!



New Invasive - Oxeye Daisy

ParkCarers have been asked to look out for the Oxeye Daisy (*Leucanthemum vulgare*). This is a highly invasive weed that is able to colonise undisturbed native vegetation and farm pastures. Report any sightings to <http://canberra.naturemapr.org/> or phone 13 22 81.

The Daisy has white flowers that are 2–6 cm wide, with overlapping rows of green bracts with brownish margins. Rosette leaves are stalked and have slightly toothed to lobed margins.



Watch out for European Dodder

A European dodder plant was recently found at a plant nursery in the ACT. Dodders are parasitic plants which affect horticulture and pastoral lands. Some species are poisonous to livestock. The photo below is golden dodder from America, courtesy of NSW DPI WeedWise. It is the highest risk of all the dodders. If you have recently purchased a plant from a nursery and it has been smothered by a plant similar to the photo (golden yellow or orange thread like stems), please send the information to Canberra Nature Map <http://canberra.naturemapr.org/> There are some look-a-like native plants, so it is important the id is confirmed. Most of the exotic dodders have denser flower clusters.



ACT Government Staff Changes

Alison McLeod is the new **Community Programs Coordinator** (previously this position was called the ParkCare and Volunteer Coordinator). Alison will be our ‘go to’ person in PCS for establishing and developing community partnerships and volunteering opportunities within our reserves, including coordination and reporting of the ParkCare program.

Philip Selmes is now the **ParkCare Ranger** (ParkCare Support Officer), in place of Craig Wainwright. The ParkCare Ranger is responsible for supporting the Districts and ParkCare groups with initiating, planning and implementing on-ground community and conservation projects. phil.selmes@act.gov.au

Nick Bakker is the **Community Groups Support Officer** in Transport Canberra and City Services Directorate. This is a new position tasked with supporting volunteers working on non-reserve land.

Landcare ACT has a new chair

Professor Peter Bridgewater has recently been appointed as the new Chair of Landcare ACT (LACT). Peter has extensive experience in academia and biodiversity conservation, which will greatly assist his work in supporting the Landcare community through his new role.

LACT is the ACT's peak body for land stewardship groups and is working to support and promote Landcare volunteers, largely through sharing their voice with high level decision makers. SACTCG is a founding member of this organisation and sits on the LACT Members Council to represent SACTCG member views to the board.

National Landcare Network Update

The National Landcare Network (NLN) is the voice of all Landcare groups across Australia at the national level: that is, it represents them to the politicians, Federal Department of Environment & Energy, the National Landcare Programme, Landcare Australia (private sector), and NRM Regions Australia.

The NLN has a Board and Members Council. The Members Council is made up of representatives from each State and Territory and its aim is to advocate for the Landcare movement and communicate the shared experiences of Landcarers across Australia. SACTCG's coordinator Martine Franco has been elected by LACT as one of the 3 ACT NLN Members Council representatives. The NLN is in discussions regarding the \$100 million announced for Landcare late last year and the development of the design of the next Federal National Landcare Programme.

Management of Eastern Grey Kangaroos

The Conservator of Flora and Fauna has released the Eastern Grey Kangaroo: Draft Controlled Native Species Management Plan for public comment. It can be found at www.environment.act.gov.au until **24 March 2017**.

MEMBER GROUP HAPPENINGS

Mulanggang Aboriginal Landcare Group

We welcome a new ParkCare group to our membership, the Mulanggang Aboriginal Landcare Group. This group has been busy for a long time working at sites in Ginninderra Catchment, and are now venturing across to our beautiful hills. Watch this space.

Farrer Ridge ParkCare Group

The Green Army have been working with the group in February helping to treat *Verbascum*, de-heading and bagging seed heads, and cutting and dabbing the many woody weeds that have flourished after the wet spring.



Green Army at work on Farrer Ridge

Red Hill Regenerators

The annual Red Hill butterfly walk was conducted on Red Hill on a very hot Sunday in January. Twenty enthusiastic members of the community joined Dr Suzi Bond, author of the '*Field Guide to Butterflies of the Australian Capital Territory*' to spot thirteen species along the ridge between the lookout and the kiosk. Many species obliged the photographers by posing conveniently with wings outspread. See <http://www.redhillregenerators.org.au/> for the list of species which were recorded on the walk, compiled by Suzi.

Friends of Tidbinbilla

In January the group attacked a large patch of blackberries in the Sanctuary and over the last few months they have been focused on a patch of *Verbascum* at Turkey Hill, cutting the heads off before they flower to see what happens if it is not let flower at all, and the soil is not disturbed. In Feb they have been working on cut and dabbing poplar suckers.

Coolleman Ridge ParkCare Group

The group have been working on reducing the number of St Johns wort and digging out *verbascum* spreading along the east side of Mt Arawang. To deal with a persistent patch of blackberry, the group have painted the blackberry leaves in the northern part of Group Area South (GAS) with a strong glyphosate solution, marking each sprayed plant with a red tag and cut-and-dabbed the blackberry in the southern GAS area to see which method is more effective. The next challenge is treating growing blackberry patches intertwined with native raspberry further up the hill.

Contact Us

Southern ACT Catchment Group Inc

Unit C8 Erindale Business Park

2 Lansell Circuit Wanniasa ACT 2903

Office: 62966400

Martine: info@sactcg.org.au

Fiona: projects@sactcg.org.au

Martin: waterwatch@sactcg.org.au

www.sactcg.org.au

